

Architecture

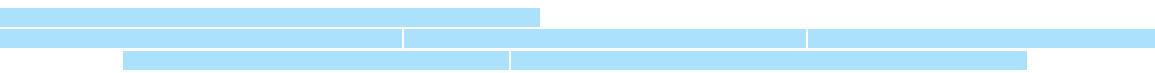
Landscape Architecture

City & Regional Planning



Austin E. Knowlton **School of Architecture**  
THE OHIO STATE UNIVERSITY

275 West Woodruff Avenue, Columbus, Ohio 43210-1138  
ph +1 614 292-1012







Architecture  
Landscape Architecture  
City & Regional Planning

001

# Table of Contents

## Context

004	History	028	Administration
006	Mission	029	Staff
007	Accreditation	030	Faculty
008	Columbus, Ohio	038	Visiting Faculty & Fellows
010	Resources		
015	Affiliations		
019	Student Organizations		
020	Special Programs		
023	Endowment Funds		
026	Honorary Degrees		
027	Campaign Committee		

Architecture	Landscape Architecture	City & Regional Planning	Financial Assistance & Awards
040 Overview	070 Overview	092 Overview	124 Undergraduate Opportunities
042 Architecture Faculty	072 Landscape Architecture Faculty	095 City and Regional Planning Faculty	126 Graduate Opportunities
043 Bachelor of Science in Architecture	073 Bachelor of Science in Landscape Architecture	096 Master of City and Regional Planning	129 Scholarships and Awards
046 Two Year Master of Architecture	076 Master of Landscape Architecture I	100 PhD in City and Regional Planning	
048 Three-Plus Year Master of Architecture	080 Master of Landscape Architecture II	104 Undergraduate Minor in City and Regional Planning	
052 Master of Architectural Studies	082 Course Descriptions	106 Course Descriptions	
054 Course Descriptions	088 Admissions	118 Admissions	
066 Admissions			

# Context

## History

Joseph Nelson Bradford graduated from The Ohio State University in 1878 with a degree in mechanical engineering. He returned to teach in the Department of Engineering in 1885. After having created the Department of Fine Arts in 1886 and the Department of Photography in 1890, he founded the eleventh architecture program in the country within the Department of Engineering in 1899. In 1900 he developed the program into a full four-

year curriculum. The first degree was conferred on John Peterson in 1903. In 1906, Bradford succeeded in creating architecture as an independent area of study within an enlarged College of Engineering by establishing an autonomous Department of Architecture. As early as 1918, a parallel four-year program in architectural engineering was introduced. The last Bachelor of Architectural Engineering degree was conferred in 1939.

Courses in landscape architecture were first offered in 1915 in the College of

Agriculture. In 1927, the program was transferred to the Department of Fine Arts. In 1937, landscape architecture was transferred to the College of Engineering and was made an integral part of the newly named Department of Architecture and Landscape Architecture. In 1950, the Board of Trustees voted to reorganize the Department into the School of Architecture and Landscape Architecture, a more nearly autonomous unit of the College of Engineering. As a climax to a growing interest in the urban environment within

the Department, the Board of Trustees voted in 1956 to initiate a program of teaching and research in city planning in the Department of Architecture and Landscape Architecture. In 1963, the program became recognized by the American Institute of Certified Planners. In 1967, the School of Architecture and Landscape Architecture became the School of Architecture.

During the 1960s, Architecture offerings were enlarged to accommodate graduate students, and a Master of Architecture was first offered in 1966.

In 1968, the faculty voted to withdraw the five-year Bachelor of Architecture degree and to initiate a new four-year degree, Bachelor of Science in Architecture, as the pre-professional degree for the established Master of Architecture. In 1969, Landscape Architecture elected to initiate a new accredited Bachelor of Science in Landscape Architecture, and this was later followed by a new Master of Landscape Architecture in 1978. In 1984, City and Regional Planning established a PhD program, in addition to its recognized masters program.

In 1994, to achieve greater efficiency and more interaction between the disciplines, the three Departments were converted to academic sections within the School. In addition, the School was renamed the Austin E. Knowlton School of Architecture in recognition of its distinguished alumnus, Austin E. "Dutch" Knowlton '31.

Today, the School has 550 students, 32 regular faculty, 34 adjunct faculty, and an administrative staff of 15. It is located in Knowlton Hall at the Northwest corner of the main academic campus.

## Mission

The mission of the [Austin E. Knowlton School of Architecture](#) is to educate future architects, planners, and landscape architects; to shape, as well as serve, the professions of **Architecture, City and Regional Planning, and Landscape Architecture**; to contribute to the intellectual and creative purposes of the University; and to promote the improvement of environmental quality and design on the campus and elsewhere.

## Accreditation

The Two Year and Three-Plus Year Master of Architecture programs are accredited by the National Architectural Accrediting Board (NAAB). The Bachelor of Science in Architecture degree is a pre-professional degree and, therefore, is not independently accredited by NAAB. However, it is an integral part of the 4+2 program leading to the Two Year Master of Architecture. Both the Bachelor of Science in Landscape Architecture and the Master of Landscape Architecture programs are accredited by the Landscape Architectural Accreditation Board of the American Society of Landscape Architects. The Master of City and Regional Planning program is accredited by the American Planning Association's Planning Accreditation Board.



## Columbus, Ohio

The Ohio State University is located in the heart of a major metropolitan area with a population of more than 1.4 million. Columbus, the capital of Ohio, is home to many national and international corporations, a national center for computer research and software development, and is a cultural center of the American Midwest. The metropolitan area has grown by six percent annually for the past five years, and is the only major city in the region to gain population.

Entertainment opportunities abound in Columbus. High Street offers live music, cultural events at the Wexner Center, shopping, and collegiate athletic events. The Short North hosts a gallery hop each month, which showcases various artists. The Brewery District contains an assortment of micro breweries and entertainment venues. The Arena District offers a variety of dining and entertainment choices, and is home to the Columbus Blue Jackets hockey team at Nationwide Arena. Columbus is also home to Major League Soccer

club, the Columbus Crew and Triple A baseball team, the Columbus Clippers. Other establishments of interest include the Columbus Museum of Art, the Columbus Symphony Orchestra, Ballet Met, the Center of Science and Industry (COSI), and the Contemporary American Theater Company. Buses run regularly from the campus area to different parts of the city, and OSU students have unlimited access.

Columbus is within 600 miles of two-thirds of the population of the United States. This makes possible extended

weekend field trips to other metropolitan areas such as New York, Boston, Philadelphia, Washington, Chicago, and St. Louis.



## Resources

### The Ohio State University

The Ohio State University is a city within a city, containing municipal amenities such as two golf courses, an airport, and a power plant. Students are offered a wide range of opportunities for extracurricular enrichment, including public lectures, musical performances, theatrical productions, and cinema.

The Knowlton School is located within

the larger context of The Ohio State University and is a part of the College of Engineering. As a land-grant institution, The Ohio State University is committed to education, research, and public service. On its Columbus and regional campuses, Ohio State offers more than 10,000 courses in 206 academic and career areas. Graduate programs include master's degree work in 129 areas of study and doctoral work in 96 areas. Ohio State has been designated as the state's major graduate and professional center. This designation offers enhanced support



for the School, allowing a more intimate educational environment with an excellent student-faculty ratio and the resources of a flagship college and large research university.

### University Libraries

The University library system, one of the largest in North America, has a completely computerized catalog that gives students multiple access paths to over 5.8 million volumes and 35,500 regularly received serial volumes.

University Libraries consists of the Main Library and more than 19 other departmental libraries and specialized collections. University Libraries is also a member of OhioLINK, a statewide library and information network linking major academic and community college

libraries in Ohio, plus the State Library.

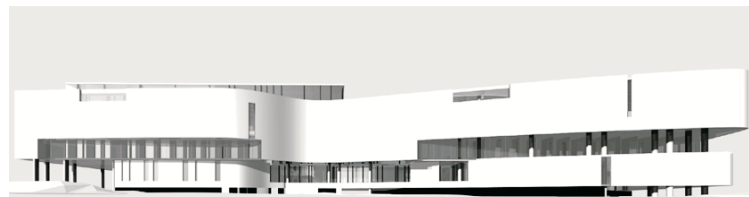
Each department library provides access to the Libraries' on-line catalog/circulation system (OSCAR), as well as to indexes, abstracts, and bibliographies pertinent to their subject areas. Librarians familiar with the subject areas, who are experts in associated research techniques, are available for consultation.

The School of Architecture Library is located in Knowlton Hall and consists of over 40,000 volumes and a listing

of over 150 periodicals. There are provisions for state-of-the-art, on-site use of and remote access to electronic information resources. The facility features video equipment, scanners, and microfilm collections.

## Knowlton Hall

Knowlton Hall, dedicated in 2004, is a state-of-the-art facility for the School of Architecture. The School's new home is based on the integration of elements: inside and out, students and faculty, old and new, school and



university, art and technology. Each of the three disciplines of architecture, landscape architecture, and city and regional planning are mixed. The design reflects the school's mission of excellence in education, innovation in design and planning, and the

stewardship of quality environment.

Knowlton Hall marks an important entrance to campus and forms a nucleus of professional schools along with the College of Engineering and Fisher College of Business. The

165,000-square-foot facility houses all classrooms, facilities, and offices for KSA's three disciplines. Students learn in the six classrooms, four seminar spaces, 350-seat auditorium, outdoor classroom spaces, and 500 studio spaces available to them. The building also features gallery space for exhibitions, central review space for critiques of student work, a materials/fabrication lab, an experimental garden space, a 40,000-volume library, two computer laboratories, a digital image library, and a café.

## Computing Resources

The school maintains over 350 computers for student use. All use the latest version of the Microsoft Windows operating system, and have approximately 35 software packages installed, including Maya, Form-Z, Photoshop, Freehand, AutoCAD, SAS, Rhino, ArcGIS, and ERDAS.

Most computers are placed directly in the design studios, where students are encouraged to use them simultaneously with their drawing and



model-making activities. There are also two distinct computer labs: a 30-seat teaching lab used for computer-focused instruction, and a 26-seat Advanced Computing Lab that contains flatbed scanners and large-format plotters.

Students also use computers in the materials/fabrication laboratory through the School's CNC equipment, to access the KSA Digital Library, and to register for classes and receive grades.

## Materials/Fabrication Laboratory

The M/I Homes Foundation Materials/Fabrication Laboratory is provided exclusively for students in the Knowlton School of Architecture. Woodworking and metalworking skills are integrated into design studio curricula. Woodworking equipment includes standard hand tools as well as up-to-date machinery: planers, joiners, lathes, sanders, and saws. Metalworking equipment includes a

metal lathe, brake shear, metal roller, and a variety of pneumatic tools. In addition, the Materials/Fabrication Laboratory contains several pieces of computer-controlled modeling equipment, including a 3-D printer, two laser cutters, a 4' x 8' 3-axis CNC mill, two desktop mills, a vacuum former, and a 3-D digitizing arm. Students learn material properties and gain hands-on-experience with construction practices using traditional equipment and the latest technology.

## KSA Digital Library

The KSA Digital Library's state-of-the-art image collections support the architecture, landscape architecture, and city and regional planning curricula in the Knowlton School. Through online resources, faculty and students can access high-quality images and multimedia files for use in research, study, or course work. The Library's exemplary teaching and research collections have helped to establish the School as an international resource for the study of

design and planning. The constantly growing database contains thousands of images that can be accessed in seconds using powerful search and browse tools. The Digital Library is accessible through the KSA web site (<http://knowlton.osu.edu>).

## Gallery

The KSA Gallery hosts a wide range of national and international traveling exhibitions. Recent exhibitions have included Lola Sheppard and Mason White's "Flatscapes," Jennifer Evans Cowley's "What's Your Sign: Creating an Authored Landscape," "Winy Maas/Berlage Institute 3-D City," "Reclaiming the Post-Technological Landscape of the American West," "Hedjuk's Wall House," and a James Bassett retrospective.

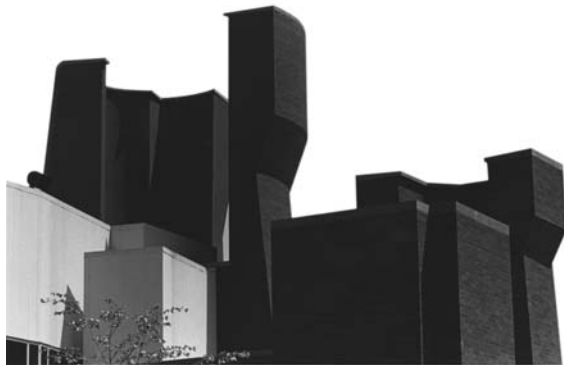


## Affiliations

### Wexner Center for the Arts

The Wexner Center for the Arts is strongly committed to the presentation of programs in architecture and design. Designed by Peter Eisenman and Richard Trott '61, the Center has cultivated a growing audience of students and design professionals. The Wexner Center has originated such exhibitions as "Mood River," an

innovative international design and art exhibition comprising an eclectic array of more than 2,000 contemporary objects from the worlds of commerce, culture, and art; "Suite Fantastique," a critically acclaimed design and architecture exhibition; "Evidence: Photography and Site," a survey of contemporary international photography with a focus on architectural space; and "House Rules," an exploration by ten teams of architects and writers about the domestic environment. Many lectures have been sponsored and symposia



organized to support exhibition programming, often in collaboration with the Knowlton School of Architecture. The Wexner Center regularly commissions new work in all fields, often through creative residency programs. It strives to build meaningful,

collaborative relationships throughout the Ohio State campus, as well as with other cultural, civic, and social organizations in the community. Design in all aspects of the built environment continues to be an important focus of the mission of the Wexner Center.

## Advanced Computing Center for the Arts & Design

Established in 1987, the Advanced Computing Center for the Arts and Design (ACCAD) at The Ohio State University is known around the world for pioneering visualization technology. ACCAD's charter is to apply advances in computing and visualization technologies to the processes, values, and ideals of the arts. ACCAD promotes interdisciplinary projects

and programs that enlist the talents of those in the arts and sciences: visual and performing artists, designers, art historians and critics, computer scientists, engineers, mathematicians, and architects. Faculty from the College of the Arts and the College of Engineering conduct research at ACCAD and supervise the work of graduate students specializing in the role of technology in the arts. Students fulfill degree requirements within their individual programs and engage in advanced research and studies in technology-related activities at ACCAD.

ACCAD maintains a state-of-the-art facility and employs expert staff from related disciplines. The facility utilizes current technology in computers, film, video, and emerging media including graphic workstations (PC, Apple Macintosh, and Silicon Graphics Octane workstations) and sophisticated peripherals and other devices.



## Center for Urban and Regional Analysis

Created in 2001, the Center for Urban and Regional Analysis (CURA) fosters interdisciplinary research on urban and regional issues at the city, state, regional, national, and international levels. CURA also serves as a catalyst for the urban research community and provides a clearinghouse for urban-related materials, data, and publications. It brings graduate students and nearly 100 university

faculty together to engage in research, teaching, and outreach as they relate to urban and regional issues. Graduate students benefit from the center by having more interdisciplinary activities such as round tables, meetings, and focus groups and more access to faculty who are conducting state-of-the-art research. CURA also works with the Neighborhood Design Center and Community Research Partners on local projects. The Center is housed in Derby Hall, and is led by Director Ed Malecki, Professor of Geography and Associate Director Hazel Morrow-

Jones, Associate Professor of City and Regional Planning.

## Ohio Supercomputer Center

The Ohio Supercomputer Center (OSC) is a shared facility for all of higher education in Ohio, providing high performance computing resources and networking services to the 91 institutions of higher education in Ohio. Founded in 1987 by a resolution of the Ohio Board of Regents, OSC provides

computing resources on a peer reviewed basis to any faculty member at a higher education institution to facilitate their scientific research and instructional needs. OSC is also the supplier of Internet services through its OARnet division. OARnet provides the universities with connections to the commodity Internet, connections to Internet2, and services to assist the universities in the deployment and management of their network services.

In addition, OSC collaborates with many faculty on research in a variety of areas

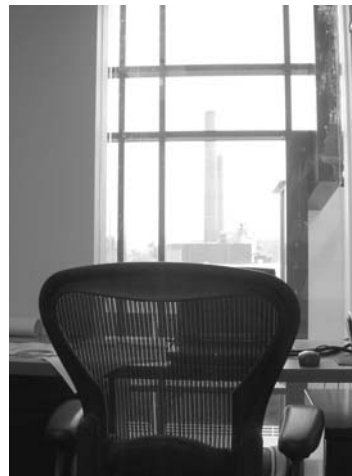
including engineering, the physical sciences, bioscience, and education. OSC provides leading edge services in computing and networking to OSU and the other universities around the state, and collaborates with national research efforts of the Department of Defense, the National Science Foundation, the Department of Energy, the National Institutes of Health, and other state and federal agencies.

Knowlton School's Professor Steven Gordon serves as Deputy Director of OSC.

## Neighborhood Design Center

The Neighborhood Design Center (NDC) is a non-profit organization that provides planning and design services for urban communities and commercial districts. Working closely with the Knowlton School of Architecture, the Design Center affords valuable internship opportunities for architecture and landscape architecture students. Student interns are a vital part of the Design Center's

operations. Under the supervision of architects, they serve as project managers and work closely with local business owners and neighborhood organizations. NDC operates out of a rehabilitated commercial building with funding support from the City's Department of Development and The Ohio State University through Ohio's Urban University Program. The Design Center has received widespread recognition and numerous commendations and awards.



## Student Organizations

### AIAS

The American Institute of Architecture Students (AIAS) is devoted to special service opportunities, educational programs, and professional networking. Among their many contributions to the School, AIAS members promote a series of seminars, coordinate a mentoring program and design charrette with AIA Columbus, circulate a quarterly

newsletter, and present the annual Beaux Arts Ball. The AIAS, with the Knowlton School of Architecture, also sponsors regular student, faculty, and alumni mixers.

### SCASLA

The Student Chapter of the American Society of Landscape Architects (SCASLA) is a social and professional organization for landscape architecture students. The organization focuses on student life beyond the classroom by offering educational workshops, social

events, speakers, design charrettes, and mentoring programs. Each quarter, SCASLA sells textbooks for all LARCH courses to students at wholesale cost. A SCASLA representative also serves on most Knowlton committees.

### CRPSA

The City and Regional Planning Student Association (CRPSA) is the formal student organization of the Section of City and Regional Planning. It is run by second-year students and

provides social activities, planning-related lectures, and study assistance. CRPSA also represents the Section of City and Regional Planning in the Council of Graduate Students of The Ohio State University.

## Special Programs

### Baumer Master Class

The Baumer Master Class immerses graduate students in the thoughts and design processes of the world's foremost architects, landscape architects, designers, critics, and historians. At least once a year a Baumer Distinguished Visiting Professor visits the School to make a series of presentations. Typically, the Master Class focuses on three aspects

of the visitor's work: motivating factors, an overview of his/her work, and a single project in detail. During the 2003-04 academic year, the Baumer Distinguished Visiting Professors were Mack Scogin and Merrill Elam, and their course featured a symposium entitled "The Shape of Things to Come." Other distinguished visitors have included Bernard Tschumi, Steven Holl, Zaha Hadid, and Jacques Herzog. All proceedings of the Baumer Master Class are collected and compiled for publication.



### Lecture Series

The Knowlton School of Architecture promotes and administers a distinguished lecture series that exposes students and faculty to contemporary issues in the theory and

practice of architecture, landscape architecture, and city and regional planning. Recent lecturers include Robert Venturi, Ken Smith, Alan Berger, Adriaan Geuze, Wolf Prix, and Graham Gund.

### International Programs

The Knowlton School of Architecture organizes annual study abroad programs to several countries. The Italy program combines extensive travel to canonical sites throughout the peninsula with studio projects in

Venice and Rome. The program has been enhanced in recent years with the addition of an on-site program director. Other study abroad programs have traveled to England, South America, and Asia and reoccur according to student demand. Recently, students have participated in a six-week long educational program that included The Netherlands, France, Spain, and Portugal. Landscape Architecture students have participated in an exchange program coordinated with the Universidad Catolica de Cordoba (UCC) in Argentina. Students have also

participated in exchanges in Slovenia and Scotland in recent years. In addition, City and Regional Planning and other students have participated in an exchange with students from Germany through a program coordinated with the Technical University of Dresden. Students first collaborate through e-mail, video-conferencing, and the internet before meeting in both Germany and the US. Collaborative projects promote a valuable exchange of culture and design philosophies as students from different countries work together.

## Architecture Scholars Program

The Knowlton School of Architecture Scholars Program is a co-curricular, living-learning opportunity for high-ability students in the freshman and sophomore years. Freshmen are housed in the Baker West residence hall, recently remodeled with a design studio and a large performance space. Scholars live in close proximity to one another, take core classes together, and go on field trips to sites of



architectural and landscape architectural interest. An in-depth tour of Frank Lloyd Wright's Fallingwater is the highlight of Autumn Quarter. Trips to Chicago and other Midwestern cities are offered in Winter and Spring Quarters. Scholars can spend Spring Break in London, earning credit towards their degrees. Scholars are invited to faculty dinners and experience early move-in for Autumn Quarter, an expanded orientation, social outings, and volunteer service opportunities. Second-year students are given the opportunity to live

together in the new Scholars East Hall, which has double rooms, semi-private baths, and large communal spaces.

## Construction Internship Program (CIP)

Architects and landscape architects have an essential connection to the building industry and must know about construction techniques and materials. The KSA CIP enhances the bond between design and building and provides an efficient way to teach design students the potential and

limits of materials and current construction techniques. The program provides both architecture and landscape architecture students with opportunities to comprehend material and assembly issues, learn to estimate construction costs, experience the full implementation process, understand the project management process, and gain summer employment in a relevant industry. By spending ten weeks learning firsthand the various aspects of the construction industry, students are better able to understand the full process of creation.

## Endowment Funds

### School of Architecture Endowment Fund

Established in 1965 by friends, faculty, students, and alumni of the School of Architecture and Landscape Architecture to be used upon recommendation of the Director of the Knowlton School of Architecture for purposes not supported by State appropriations.

### School of Architecture Library Endowment Fund

Established in 1986 by staff and friends of the Department of Architecture to provide for books in the Knowlton School of Architecture's library collection.

### Herbert Baumer Fund

Established in 1996 with gifts from the estate of Professor Emeritus Baumer to support seminars, lectures, instruction of design studios by outstanding members of the architectural and related professions,

research or study projects, grants for graduate study, and the expansion and enrichment of the professional library of the School.

### Herbert Baumer Memorial Fund in Architecture

Established in 1977 by colleagues, friends, and relatives in memory of Professor Emeritus Baumer to support scholarships, fellowships, research, and other architectural design projects.

### India Boyer '30 Fund

Established in 1999 with a gift from the estate of India Boyer (BS Arch Eng 1930) to recognize outstanding teaching and research by a faculty member in the Knowlton School of Architecture.

### [Elmer/Gless Digital Library Fund](#)

Established in 2004 with gifts from Franklin L. Elmer (MCRP 1967) and Ruth M. Gless (M Arch, University of Virginia, 1979) of Columbus, founding partners of Lincoln Street Studio. The fund is used to support the Knowlton School of Architecture Digital Library and the production of images for the study of architecture, landscape architecture, and planning.

### [J. Parker Garwick '30 Fund](#)

Established in 1966 by J. Parker Garwick (BS Arch Eng 1930) to provide funds to be used by the Dean of the College of Engineering with preference given to the Architecture Section.

### [Herb and DeeDee '88 Glimcher Distinguished Visiting Landscape Professorship Fund](#)

Established in 1997 with gifts from Herb and DeeDee (BSLA 1988) Glimcher to support a Distinguished Visiting Professor in the Landscape Architecture Section who will instruct

design studios, make public presentations, and when appropriate, provide guidance for the further development of Chadwick Arboretum.

### [DeeDee Glimcher '88 Lecture Fund](#)

Established in 1987 by Herb and DeeDee (BSLA 1988) Glimcher, friends, alumni, and faculty of the Department of Landscape Architecture to support lectures on landscape architecture.

### [James E. Gui '54 Design Competition Awards Fund](#)

Established in 1996 through gifts from

James E. Gui (B Arch 1954) to fund the James E. Gui '54 Design Competition in the senior design studio of the Architecture Section.

### [Walter H. Kidd '29 Fund](#)

Established in 1986 by Walter H. Kidd (B Arch Eng 1929) to be used at the discretion of the Dean of the College of Engineering. A portion of this fund is used to support graduate fellowships for each of the disciplines in the Knowlton School of Architecture.

#### Howard E. LeFevre '29 Fellowship

Established in 1999 with a gift from Howard E. LeFevre (B Arch Eng 1929) to create a fellowship to support a young, "emerging" practitioner in the School to teach an undergraduate studio and produce a monograph or exhibition.

#### Paul D. Morrill Memorial Lecture Fund

Established in 1986 by Alice B. Morrill and friends in memory of Paul D. Morrill, retired Assistant University Architect, to underwrite the cost of lectures in the Knowlton School of Architecture.

#### Ohio Housing Research Fund

Established in 1949 by Galen F. Oman (BS Arch Eng 1920) and others to foster a continuous program of education and research in developing and improving housing.

#### Schooley Architecture Library Endowment Fund

Established in 2003 by the Schooley Family in honor of John P. Schooley, Sr. (B Arch Eng 1923), John P. Schooley, Jr. (B Arch 1951), and Palmer B. Schooley (BS Arch 1982) to support the collection, staff, and technology needs of the Knowlton School Library.

#### Richard W. Trott '61 Distinguished Visiting Professorship Fund

Established in 1998 with gifts from the estate of Richard W. Trott (BS Arch 1961), his family, friends, and

colleagues to support a Distinguished Visiting Professor in one of the School's three sections to teach a design studio, seminar, and/or lecture course.

#### Jerrold R. Voss Director's Fund

Established in 1997 by faculty, staff, and friends of Jerrold R. Voss to support faculty research in the Knowlton School of Architecture in honor of Dr. Voss' tenure as Director of the School of Architecture from 1981 to 1997.



## Honorary Degrees

Nominated by The Austin E. Knowlton School of Architecture Faculty.

J. Walter Severinghaus '31 \*

Humane Letters, 1970

Walter L. Chambers '29 \*

Science, 1977

Serge I. Chermayeff \*

Humanities, 1980

Philip Johnson

Fine Arts, 1988

Martin Meyerson

Human Letters, 1991

Hideo Sasaki \*

Fine Arts, 1993

Austin E. Knowlton '31 \*

Architecture, 1995

Brian Urquhart

International Policy, 2000

Daniel U. Kiley \*

Landscape Architecture, 2001

Howard E. LeFevre '29

Architecture, 2002

\* Deceased





## Faculty & Staff

### Administration

[Jean-Michel Guldmann](#)

Interim Director  
Knowlton School of Architecture  
[guldmann.1@osu.edu](mailto:guldmann.1@osu.edu)

[Ashley Schafer](#)

Section Head  
Architecture  
[schafer.111@osu.edu](mailto:schafer.111@osu.edu)

[Laurel McSherry](#)

Section Head  
Landscape Architecture  
[mcsberry.2@osu.edu](mailto:mcsberry.2@osu.edu)

[Kenneth Pearlman](#)

Section Head  
City & Regional Planning  
[pearlman.1@osu.edu](mailto:pearlman.1@osu.edu)

## Staff

[Angela V. Beer](#)

Academic Advisor

[beer.38@osu.edu](mailto:beer.38@osu.edu)

[Matt Bernhardt](#)

Webmaster and Digital Fabrications  
Coordinator

[bernhardt.7@osu.edu](mailto:bernhardt.7@osu.edu)

[Amy Carey](#)

Alumni & Communications Coordinator

[carey.189@osu.edu](mailto:carey.189@osu.edu)

[Todd Clementz](#)

Systems Manager

[clementz.7@osu.edu](mailto:clementz.7@osu.edu)

[Jennifer Henman](#)

Library Manager

[henman.4@osu.edu](mailto:henman.4@osu.edu)

[Lindsey Margaroli](#)

Development Officer

[margaroli.1@osu.edu](mailto:margaroli.1@osu.edu)

[Lorrie McAllister](#)

Visual Resources Curator

[mcallister.50@osu.edu](mailto:mcallister.50@osu.edu)

[Jane McMaster](#)

Architectural Librarian

[mcmaster.1@osu.edu](mailto:mcmaster.1@osu.edu)

[Ryan Palider](#)

Shop Coordinator

[palider.1@osu.edu](mailto:palider.1@osu.edu)

[Vi Schaaf](#)

Administrative Associate, Fiscal Officer

[schaaf.1@osu.edu](mailto:schaaf.1@osu.edu)

[Amy Shaw](#)

Undergraduate Programs Coordinator

[shaw.229@osu.edu](mailto:shaw.229@osu.edu)

[Jeff Shaw](#)

Systems Manager

[shaw.152@osu.edu](mailto:shaw.152@osu.edu)

[Ellen Wallace](#)

Graduate Programs Coordinator

[wallace.15@osu.edu](mailto:wallace.15@osu.edu)

[Wendy Wolpert](#)

Assistant to the Director

[wolpert.9@osu.edu](mailto:wolpert.9@osu.edu)

## Faculty

### Jane Amidon

**Assistant Professor;** BA History / Environmental & Land Use Studies, Williams College, MLA, Harvard University.

### Edward Beltran

**Lecturer;** BED, Universidad de Puerto Rico; M Arch, The Ohio State University.

### Dale F. Bertsch

**Professor Emeritus;** AICP; BS Landscape Architecture and Urban Planning, Michigan State University.

### Beth Blostein

**Associate Professor;** BS Arch, MA Industrial Design, The Ohio State University; M Des, Harvard University.

### Norman K. Booth

**Professor Emeritus;** FASLA; B Larch, State University of New York at Syracuse; MLA, University of Illinois.

### J. Brooks Breeden

**Professor Emeritus;** ASLA; BLA, North Carolina State University; MLA, University of Georgia.

### Beatrice Bruscoli

**Lecturer and Italy Program Coordinator;** Laurea in Architettura, Università La Sapienza di Roma; M Arch, The Ohio State University; Dottorato di Ricerca in Progettazione Architettónica, Università degli Studi di Genova.

### Paolo Burgi

**Glimcher Distinguished Visiting Professor;** Landscape Architecture and Planning, Engineering School of Rapperswil.

### Michael Cadwell

**Associate Professor;** AIA; BA English, Williams College; M Arch, Yale University.

### George M. Clark

**Professor Emeritus;** RA; BS Architectural Engineering, MS Arch, University of Illinois.

**Maria Manta Conroy**

**Assistant Professor;** BS Systems Engineering, University of Pennsylvania; MS Systems Engineering, University of Virginia; PhD City and Regional Planning, University of North Carolina.

**Jennifer Evans Cowley**

**Assistant Professor;** BS, Political Science, Texas A&M University; MUP, Texas A&M University; MPA, University of North Texas; PhD, Texas A&M University.

**Aleksandr Daskalov**

**Lecturer;** B Arch, Miami University; M Arch, The Ohio State University.

**Wayne E. Dipner**

**Associate Professor Emeritus;** RA; BS Education, B Arch, The Ohio State University.

**Georgina Dodge**

**Lecturer;** BA, MA, PhD English, University of California.

**Peter Eisenman**

**Herbert Baumer Distinguished Visiting Professor;** B Arch, Cornell University; M Arch, Columbia University; MA, PhD, University of Cambridge; Honorary Doctor of the Arts, University of Illinois, Chicago.

**Shoreh Elhami**

**Lecturer;** BA Architectural Engineering, University of Tehran, Iran; MCRP, The Ohio State University.

**William Keoni Fleming**

**Lecturer;** BA Art/Art History, B Arch, Rice University; M Arch, Princeton University.

**Todd Gannon**

**Lecturer;** BS Arch, M Arch, The Ohio State University.

**Jacqueline Gargus**

**Associate Professor;** RA; BA Art and English, Wellesley College; M Arch, University of Pennsylvania.

### [Deborah Yale Georg](#)

**Associate Professor;** RLA; BSLA, The Ohio State University; MLA, University of Massachusetts.

### [Lawrence C. Gerckens](#)

**Professor Emeritus;** Certificate in Art, The Cooper Union; BS Arch, University of Cincinnati; MRP, Cornell University.

### [Raffaella Fabiani Giannetto](#)

**Assistant Professor;** Laurea, University of Palermo; MLA, MS Arch, PhD, University of Pennsylvania.

### [Kimberly Gibson](#)

**Lecturer;** BA American Studies, Miami University.

### [Steven I. Gordon](#)

**Professor;** AICP; BA Geography, State University of New York at Buffalo; MA, PhD, Geography, Columbia University.

### [Douglas Graf](#)

**Associate Professor;** AB Architecture, Princeton University; M Arch, Harvard University.

### [Jackie Graham](#)

**Lecturer;** BS Accounting, University of South Florida; M Mgmt, Northwestern University; MCRP, The Ohio State University.

### [Robert S. Green](#)

**Professor Emeritus;** BSCE, MSE, Purdue University.

### [Jamie Greene](#)

**Lecturer;** BS Arch, The Ohio State University; MUP, University of Virginia.

### [Samuel Gresham, Jr.](#)

**Lecturer;** BS Urban and Regional Planning, University of Illinois.

### [Jean-Michel Guldmann](#)

**Professor and Interim Director;** Ingenieur Civil des Mines, Ecole des Mines, France; MSc & DSc, Urban and Regional Planning, Technion, Israel Institute of Technology.

### [James E. Hiss](#)

**Associate Professor Emeritus;** ASLA; BS Arch, M Arch, The Ohio State University.

**Roberto H. Jimenez**

**Lecturer;** BS Arch, M Arch, The Ohio State University.

**Kay Bea Jones**

**Associate Professor;** BA Studio Arts, St. Olaf College; M Arch, Yale University.

**John Kelleher**

**Lecturer;** RA; B Arch, University of Arizona; MS Arch, Columbia University.

**Jason Kentner**

**Lecturer;** BLA, The Pennsylvania State University; MLA, Harvard University.

**Jeffrey Kipnis**

**Professor;** BS, Georgia Tech University; MS Physics, Georgia State University.

**Judith L. Kitchen**

**Lecturer;** BA Arch, Ohio State University; M Arch, University of Virginia.

**Paul William Lantz**

**Lecturer;** B Arch, MS Eng Mech, The Ohio State University.

**Kenneth S. Lee**

**Associate Professor Emeritus;** RA; B Arch, University of Minnesota; M Arch, Massachusetts Institute of Technology; PhD, University of Michigan.

**Lawrence W. Libby**

**Professor;** BS, Agricultural Science, University of Maine; MS and PhD, Agricultural Economics, Cornell University.

**Robert S. Livesey**

**Professor;** FAIA; AB Architecture, Princeton University; M Arch, Harvard University.

### Willie Longshore

**Professor Emeritus;** BA Art, Miami University; MA Art, Kent State University, MA Educational Administration, Lincoln University.

### Yousef Marzeki

**Associate Professor Emeritus;** RA; Diploma in Architecture, Hammersmith College, London; MCP, Yale University.

### Mark McCord

**Professor;** BSCE, Purdue University; MSIE, Stanford University; PhD Civil Engineering, Massachusetts Institute of Technology.

### John McMorrough

**Assistant Professor;** B Arch, University of Kansas; M Arch, Harvard University.

### Laurel McSherry

**Associate Professor and Section Head;** ASLA; BS Environmental Studies, Rutgers University; MLA, Harvard University.

### Susan Melsop

**Lecturer;** BS Arch, The Ohio State University; M Arch, University of Illinois.

### W. Raymond Mills

**Associate Professor Emeritus;** AB Philosophy, University of North Carolina; PhD Sociology, University of Michigan.

### Aimee Moore

**Lecturer;** BS Arch, M Arch, The Ohio State University.

### Hazel A. Morrow-Jones

**Associate Professor;** BA Geography, Anthropology, Macalester College; MA, PhD Geography, The Ohio State University.

### Jane Murphy

**Associate Professor;** RA; BA Art, Smith College; M Arch, Yale University.

### Keith Myers

**Lecturer;** BSLA, The Ohio State University; Founder, Senior Partner, MSI, Columbus, Ohio.

### Jack L. Nasar

**Professor;** BA Arch, Washington University; MUP, Urban Planning, New York University; PhD Man Environment Relations, The Pennsylvania State University.

### José Oubrierie

**Professor;** Honorary AIA; Ecole Nationale Supérieure des Beaux Arts, Paris.

### Mark Ours

**Lecturer;** RA; B Arch, Carnegie Mellon; M Arch, University of Pennsylvania.

### Bart Overly

**Lecturer;** BS Arch, The Ohio State University; M Arch, Princeton University.

### Ryan Palider

**Lecturer;** BS Arch, M Arch, The Ohio State University.

### Vince Papsidero

**Lecturer;** BA, Journalism, University of Georgia; MCRP, The Ohio State University.

### Jose Parral

**Lecturer;** BLA, University of California, Berkeley; MA, Landscape Urbanism, Architectural Association School of Architecture.

### Michael Passe

**Professor Emeritus;** PE, BEE, The Cooper Union.

### Kenneth Pearlman

**Professor and Section Head;** AICP; AB Philosophy, University of Pennsylvania; JD, Columbia University; MCP, University of Pennsylvania.

### Gary Schmidt

**Lecturer;** BSLA, The Ohio State University; M Des, Harvard Graduate School of Design.

### Robert Samuelson

**Associate Professor Emeritus;** AIA; B Arch, University of Texas, Austin; M Arch, Rice University.

### Ashley Schafer

**Associate Professor and Section Head;** BS Arch, University of Virginia; M Arch, Columbia University.

### John W. Simpson

**Professor;** BSLA, The Ohio State University; MLA, Harvard University; MA, Duke University.

### Kivi Sotamaa

**Assistant Professor;** MA, University of Art and Design Helsinki UIAH.

### Terrence Sullivan

**Lecturer;** BS Arch, The Ohio State University; BS Engineering, Michigan State University.

### Angela Sutton

**Lecturer;** BS, College of William and Mary; MS, University of Chicago; M Arch, The Ohio State University.

### Lisa Tilder

**Associate Professor;** RA; B Arch, The Pennsylvania State University; M Arch, The Ohio State University.

### George Tobey

**Professor Emeritus;** BS Forestry, University of Massachusetts; MLA, Harvard University.

### Stephen Turk

**Associate Professor;** RA; B Arch, The Pennsylvania State University; M Arch, The Ohio State University.

### James N. Upton

**Associate Professor;** BA, MA, PhD Political Science, The Ohio State University.

### Aron Vinegar

**Assistant Professor;** BA Art History and History, MA, McGill University; PhD Art History, Northwestern University.

### Philip A. Viton

**Associate Professor;** BA Economics, Philosophy, Brown University; PhD Economics, University of California at Berkeley.

### Burkhard von Rabenau

**Professor;** Dipl. Ing., Architecture, University of Stuttgart; MCP and PhD., University of California at Berkeley.

### Jerrold R. Voss

**Professor Emeritus;** AICP; B Arch, Cornell University; MCP, PhD City Planning, Harvard University.

### Lawrence W. Walquist, Jr.

**Professor Emeritus;** ASLA; BLA,  
University of Illinois; MLA, Harvard  
University.

### Douglas S. Way

**Professor Emeritus;** ASLA; BLA,  
University of Wisconsin; MLA, Harvard  
University; MA, PhD Geography, Clark  
University.

### Christos I. Yessios

**Professor Emeritus;** BA Law, B Arch,  
Aristotelian University; PhD, Carnegie-  
Mellon University.

### Paul Young

**Professor Emeritus;** AIA; B Arch, The  
Ohio State University; M Arch,  
Architectural History, University of  
Illinois.

## Visiting Faculty & Fellows

### Herbert Baumer Distinguished Visiting Professors

1997/98 Thom Mayne & Zaha Hadid  
1998/99 Bernard Tschumi  
1999/00 Steven Holl  
2000/01 Jacques Herzog  
2001/02 Ben Van Berkel &  
Caroline Bos  
2002/03 Elizabeth Diller &  
Richard Scofidio  
2003/04 Mack Scogin & Merrill Elam  
2004/05 Wolf Prix  
2005/06 Peter Eisenman

### Glimcher Distinguished Visiting Professors

2002/03 Ken Smith &  
Michael Van Valkenburgh  
2003/04 Peter Walker  
2004/05 Grant Jones  
2005/06 Paolo Burgi

### Herbert Baumer Professors

1996/97 Ming Fung & Craig Hodgetts  
1997/98 Wes Jones  
1998/99 William MacDonald  
1999/00 Andrew Zago  
2001/02 Paul and David Lewis  
2002/03 Robert Somol  
2003/04 Martin Bechthold  
2004/05 Martin Bechthold

Richard W. Trott '61  
Distinguished Visiting  
Professors

1998/99 William Johnson  
1999/00 Jane Amidon  
Peter O'Shea  
Jane Wolff  
2000/01 Amy Landesburg  
2001/02 Timothy Beatley  
2002/03 Andre Chaszar  
2003/04 Robert Somol  
2004/05 Robert Somol  
2005/06 Francois Roche

Howard E. LeFevre '29  
Emerging Practitioner Fellows

1999/00 Karl Chu  
2000/01 Michael Silver  
2001/02 Joachim Huber  
2002/03 Janette Kim  
2003/04 Lola Sheppard &  
Mason White  
2004/05 Stephen Roe &  
Chiafang Wu  
2005/06 Andrew Kudless

